

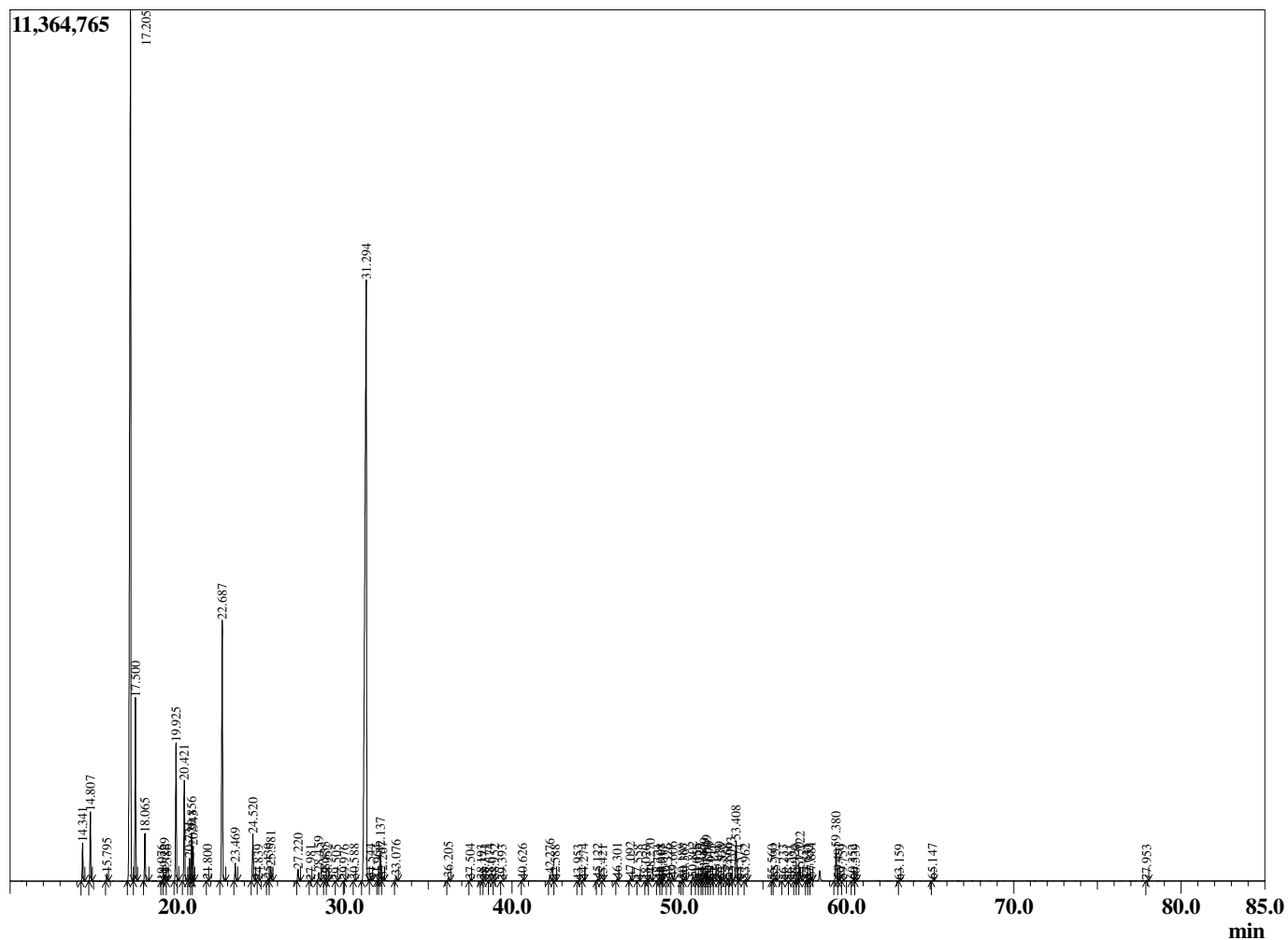
Sample Information

Sample Type : Essential Oil
 Sample Name : Zingiber cassumunar :
 Injection Volume 0.10

Plai
 Lot# TLW15-WC
 Country: Thailand



Chromatogram Zingiber cassumunar



R.Time	Name	Area%
14.341	alpha-Thujene	0.89
14.807	alpha-Pinene	1.63
15.795	Camphene	0.18
17.205	Sabinene	31.72
17.500	beta-Pinene	4.50
18.065	Myrcene	1.21
19.076	Pseudolimonene	0.01
19.229	alpha-Phellandrene	0.19
19.386	delta-3-Carene	0.01
19.925	alpha-Terpinene	3.64
20.421	para-Cymene	2.72
20.734	Limonene	0.61
20.856	beta-Phellandrene	1.31
20.943	1,8-Cineole	0.87
21.800	(E)-beta-Ocimene	0.02
22.687	gamma-Terpinene	7.60
23.469	trans-Sabinene hydrate	0.49
24.520	Terpinolene	1.31
24.839	para-Cymenene	0.01
25.430	Linalool	0.05
25.581	cis-Sabinene hydrate	0.43
27.220	cis-para-Menth-2-en-1-ol	0.35
27.981	Unidentified	0.02
28.459	trans-para-Menth-2-en-1-ol	0.27
28.833	Camphor	0.11
28.952	Unidentified	0.02
29.505	Unidentified	0.01
29.976	Isoborneol	0.02
30.588	Borneol	0.03
31.294	Terpinen-4-ol	32.07
31.544	para-Cymen-8-ol	0.06
31.964	Unidentified	0.01
32.137	alpha-Terpineol	0.85
32.267	cis-Piperitol	0.09
33.076	trans-Piperitol	0.14
36.205	Unidentified	0.10
37.504	cis-Ascriдол glycol	0.04
38.193	Bornyl acetate	0.02
38.371	Unidentified	0.01
38.674	trans-Ascriдол glycol	0.03
38.952	4-Terpinyl acetate	0.03
39.393	Unidentified	0.01
40.626	Unidentified	0.04
42.276	alpha-Terpinyl acetate	0.21
42.588	Eugenol	0.03
43.953	Unidentified	0.01
44.274	alpha-Copaene	0.04
45.122	beta-Elemene	0.05
45.421	Unidentified	0.01
46.301	alpha-Gurjunene	0.07
47.092	trans-beta-Caryophyllene	0.09
47.558	Unidentified	0.02
48.020	Unidentified	0.02
48.270	Aromadendrene	0.25
48.721	alpha-Guaiene	0.04
48.908	cis-Murrola-3,5-diene	0.03

R.Time	Name	Area%
49.017	(E)-beta-Farnesene	0.03
49.326	alpha-Humulene	0.05
49.606	Alloaromodendrene	0.11
50.188	Unidentified	0.05
50.307	cis-Murrola-4(14),5-diene	0.09
50.802	Ar-Curcumene	0.12
51.055	Unidentified	0.03
51.229	Unidentified	0.04
51.387	beta-Selinene	0.05
51.499	Viridiflorene	0.24
51.649	alpha-Zingiberene	0.35
51.779	Bicyclogermacrene	0.16
51.915	alpha-Murolene	0.04
52.131	Unidentified	0.02
52.439	beta-Bisabolene	0.12
52.538	beta-Curcumene	0.04
52.866	cis-1-(3,4-Dimethoxyphenyl)but-1-ene	0.08
53.093	delta-Cadinene	0.27
53.408	beta-Sesquiphellandrene	1.32
53.574	Unidentified	0.02
53.962	trans-Cadina-1,4-diene	0.05
55.560	Germacrene B	0.01
55.752	cis-1-(3,4-dimethoxyphenyl)butadiene	0.09
56.233	Palustrol	0.02
56.581	Spathulenol	0.02
56.920	Caryophyllene oxide	0.01
57.130	Unidentified	0.07
57.222	trans-1-(3,4-Dimethoxyphenyl)but-1-ene	0.46
57.631	Viridiflorol	0.05
57.752	Guaiol	0.04
57.881	Curzerenone	0.11
59.380	trans-1-(3,4-Dimethoxyphenyl)butadiene	1.09
59.491	1-epi-Cubenol	0.07
59.759	Unidentified	0.01
60.352	Unidentified	0.03
60.539	delta-Cadinol	0.01
63.159	Germacrone	0.01
65.147	Unidentified	0.03
77.953	Unidentified	0.02
		100.00